

Instruction for cartridge replacement

Preparing the Pitcher

- 1 Wash the pitcher, the funnel and the lid well. Wash these items with a clean sponge and neutral kitchen detergent. Make sure all detergent is thoroughly rinsed off after washing.

Forbidden: Do not wash the cartridge with the detergent.

Preparing the Filter Cartridge

- 1 Take the cartridge out from the bag and peel off the blue film.

- 2 Rinse the filter cartridge with tap water.

- 3 Insert the cartridge into the funnel and press in it to the position until it stops.

- 4 Fill the pitcher 2/3rd with tap water.

- 5 Set the funnel with the cartridge into the pitcher and place the lid on the top.

- 6 Let stand for 20 minutes.

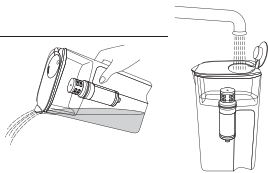
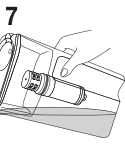
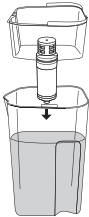
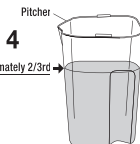
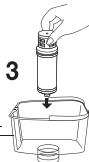
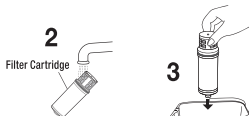
- 7 Pour out the water that has collected in the funnel and the pitcher.

- 8 Fill the funnel to the water line with tap water and then allow it to filter naturally by gravity.

- 9 Once the water in the funnel has been filtered pour away the water that has collected in the pitcher.

- 10 Repeat procedures #8 and #9 twice more (for a total of 3 times.)

Hold the filter cartridge above the O-ring.



Maintenance

Clean the pitcher, the funnel and the lid periodically.

- Wash with a clean sponge and neutral kitchen detergent, and then rinse off thoroughly. Failure to rinse thoroughly may result in cracks or deteriorated water quality.

AJP407-D Specifications

Product Name	Water Filtration Pitcher
Model number	AJP407-D
Material	Body: SAN (AS) Cartridge: ABS Lid: PP, ABS Funnel: MBS
Filter components	Hollow fiber membrane, Activated carbon, Ion exchanger
Working Pressure (min/max) Capacity Service flow rate Filtered water temperature (min/max) Electrical requirements Replacement cartridge	Atmospheric 26.4gallons (100L) 0.1L/min 33°F/95°F (1°C/35°C) none ACP5-D

Performance data

	Cleamsui Reduction Data	NSF/ANSI Standard Requirements	
Substance	Overall percentage reduction	Influent challenge concentration	Reduction requirement / Maximum permissible product water concentration
NSF/ANSI Standard 42 - Aesthetic Effects			
Chlorine	97.1 %	2.0 mg/L \pm 10 %	\geq 50 %

Maintenance according to the manufacturer's instructions is critical for proper filter performance. Filter life should not exceed 26.4 gallons. If filtering time is notably increased, replace the cartridge earlier.

This system has been tested according to NSF/ANSI standard 42 standards by NSF International for reduction of the substances listed above. The concentration of the indicated substances in water entering the system was reduced less than or equal to the permissible limit for water leaving the system, as specified in NSF/ANSI standard 42.

The system conforms to NSF/ANSI standard 42 for specific performance claims as verified and substantiated by test data. While testing was performed under standard laboratory conditions, actual performance may vary.

The use of this system need comply with applicable state and local laws.